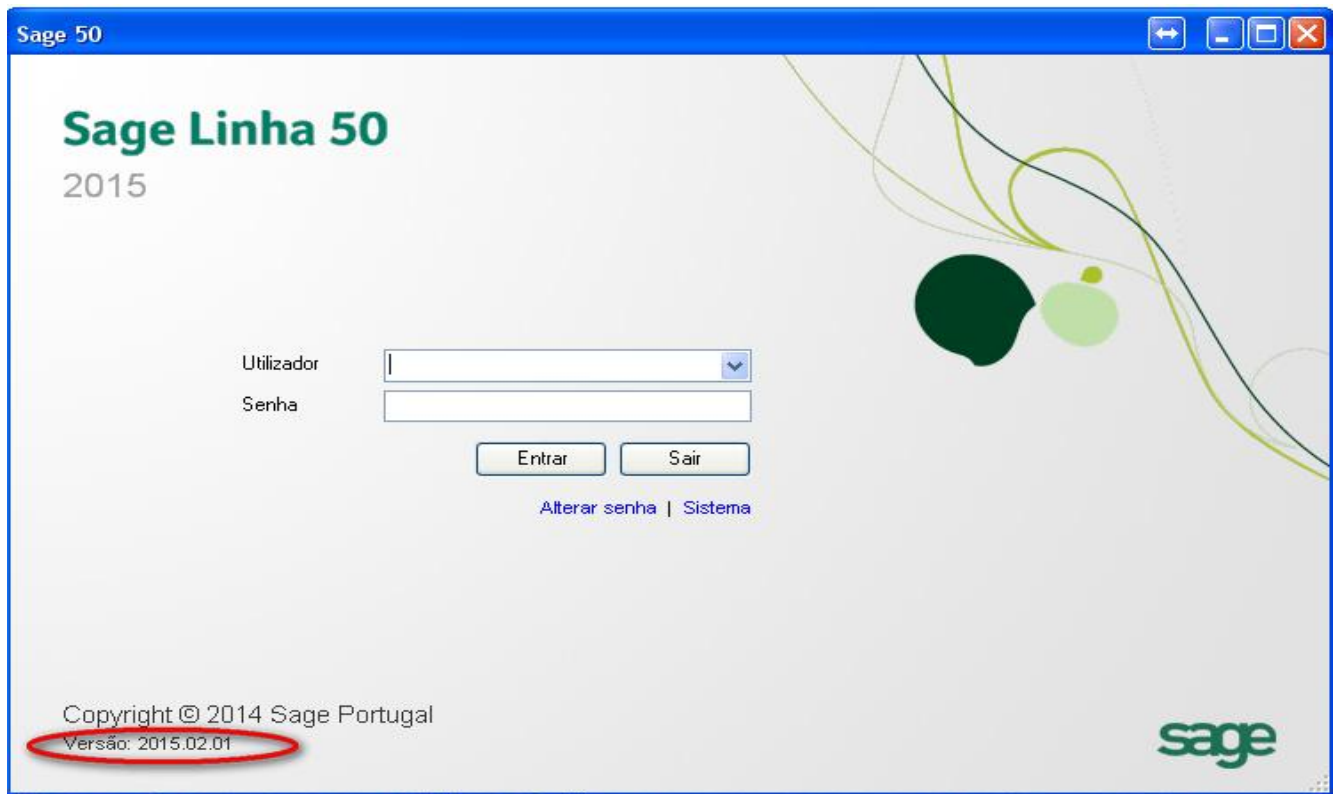
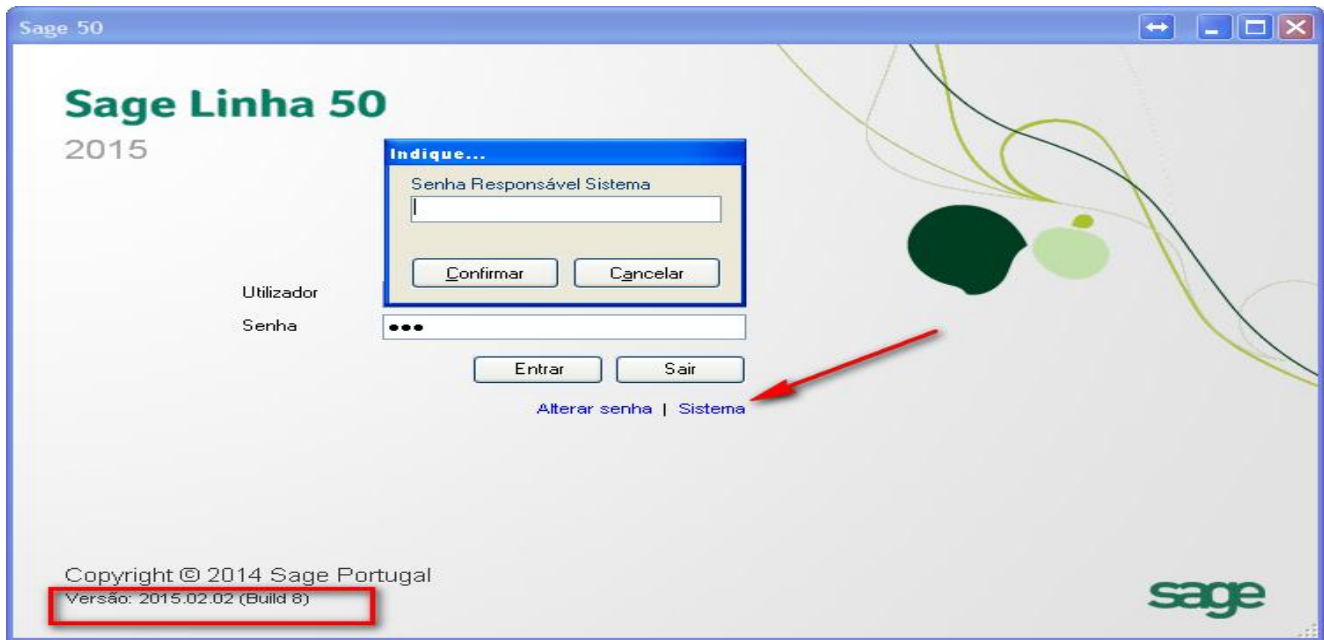


Procedimentos para actualizar as taxas de IRS 2015 em SAGE Linha50 / Linha Next

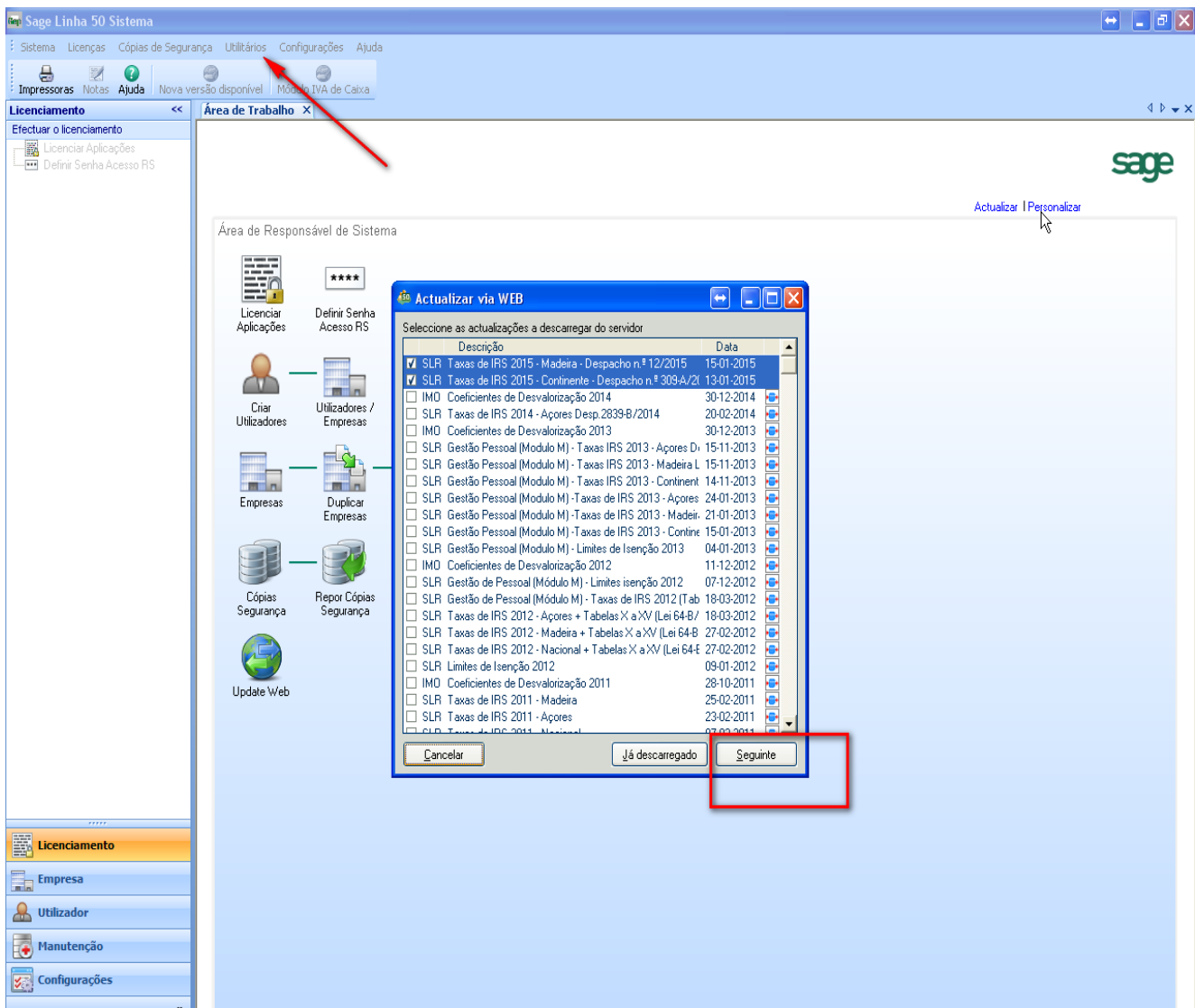
Verificar se tem o serviço sage care válido e actualize a aplicação para a versão 2015.02.02 ou superior.



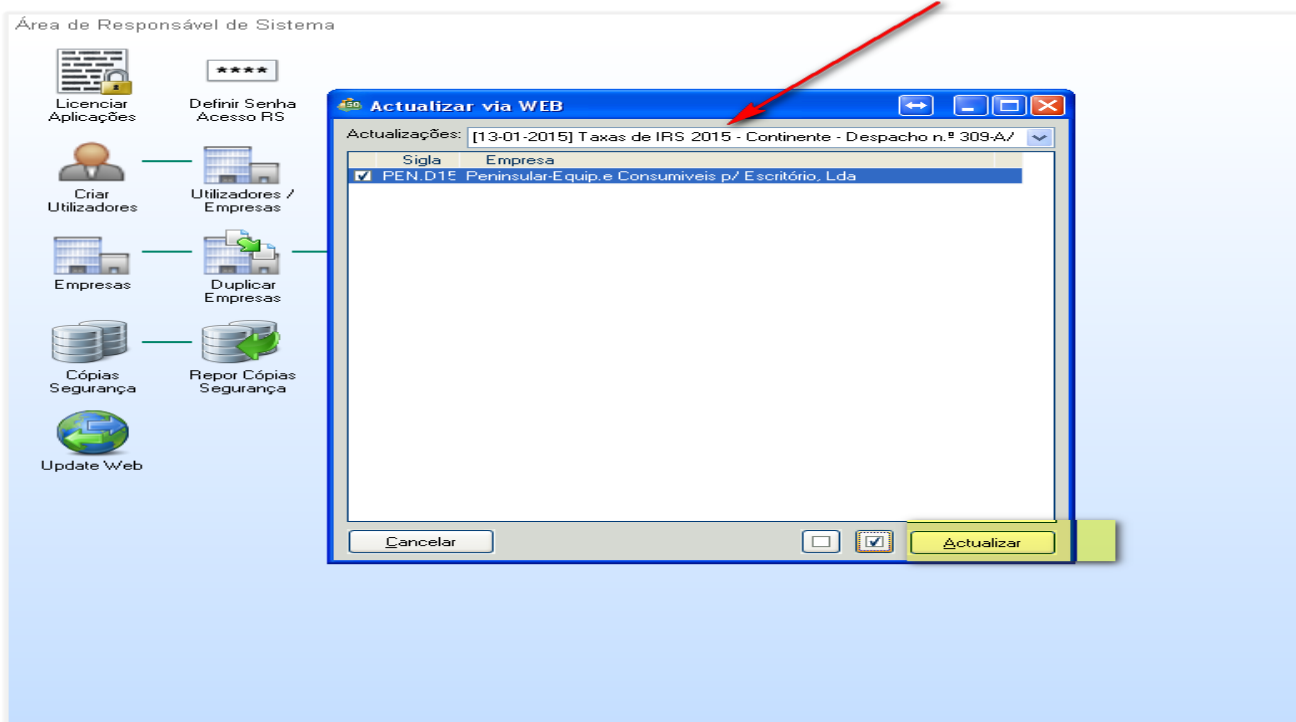
Aceder a sistema



Em utilitários / actualizações via Web marcar as taxas que pretende descarregar



Seleccionar as taxas IRS 2015 Continente , marcar as empresas que pretendidas e actualizar.



Verificar se as taxa foram colocadas com sucesso.

